



CRICKET
ACT

Appendix 1: Provision and Accessibility Analysis

Provision and Accessibility Analysis - Overview

In this Strategy, accessibility and provision are used as distinct but complementary measures to assess the overall cricket facility network.

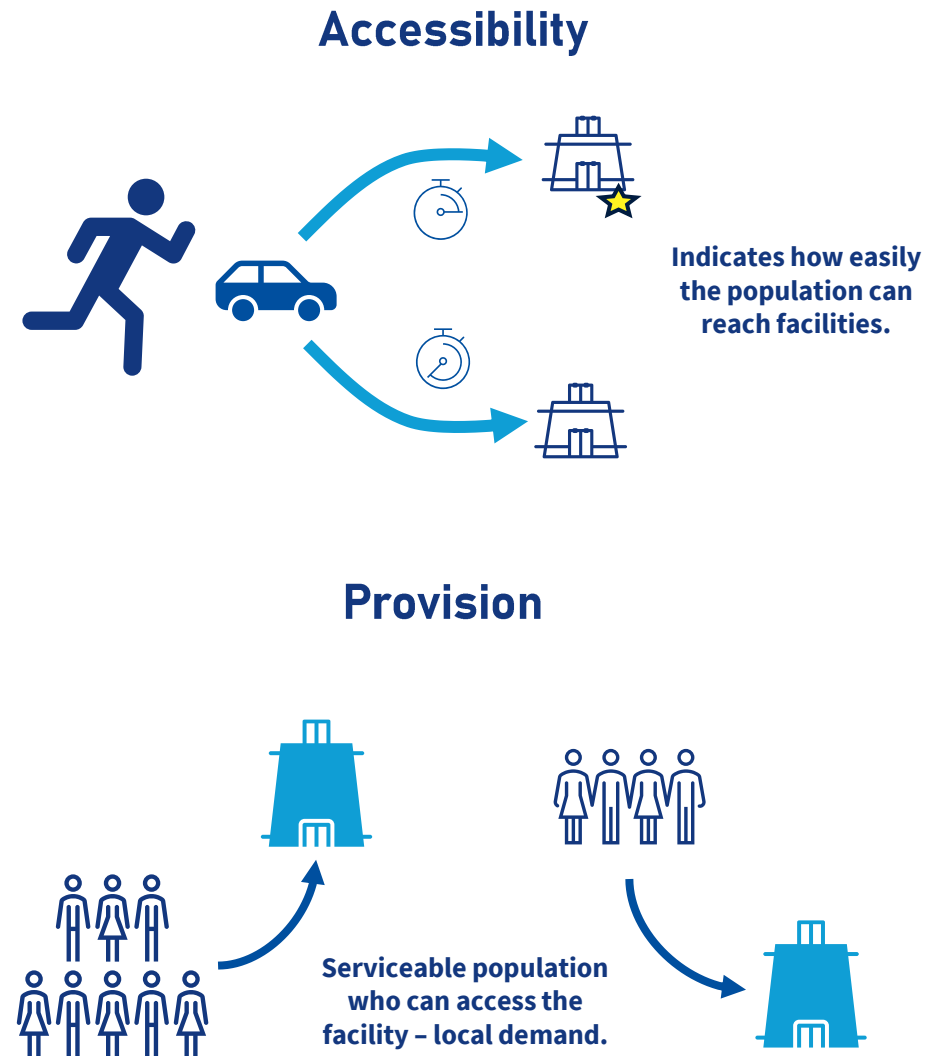
Unlike traditional population-based ratios that purely look at the quantitative provision of facilities, this analysis accounts for the geographic distribution and accessibility of facilities and the characteristics of the surrounding population that can access them.

The intended outcome of the analysis is to identify priority locations for new facilities or targeted upgrades, optimising the efficiency, equity and sustainability of the overall facility network.

Within this analysis:

- **Accessibility** measures the equity of access the population has to its nearest facility, expressed in minutes of drive time (in optimal driving conditions). It indicates how easily participants can reach infrastructure and highlights spatial strengths and deficiencies across the ACT. It is important to note we have chosen not weight facilities by the scale or quality of infrastructure, meaning that in practice, some users may bypass their nearest facility in favour of one offering superior amenities.
- **Provision** builds on accessibility by assessing the population within each facility's catchment. This provides a measure of the serviceable population per facility, incorporating both facility density and population density. In doing so, provision illustrates the extent to which each practice net, wicket or oval is able to meet local demand.

Together, these measures establish a robust framework for understanding the distribution and capacity of cricket facilities, highlighting where pressures are most acute and where future investment should be prioritised.



Synthetic Wicket - Accessibility

Synthetic wickets form the backbone of cricket participation in the ACT, underpinning junior, community and social competitions.

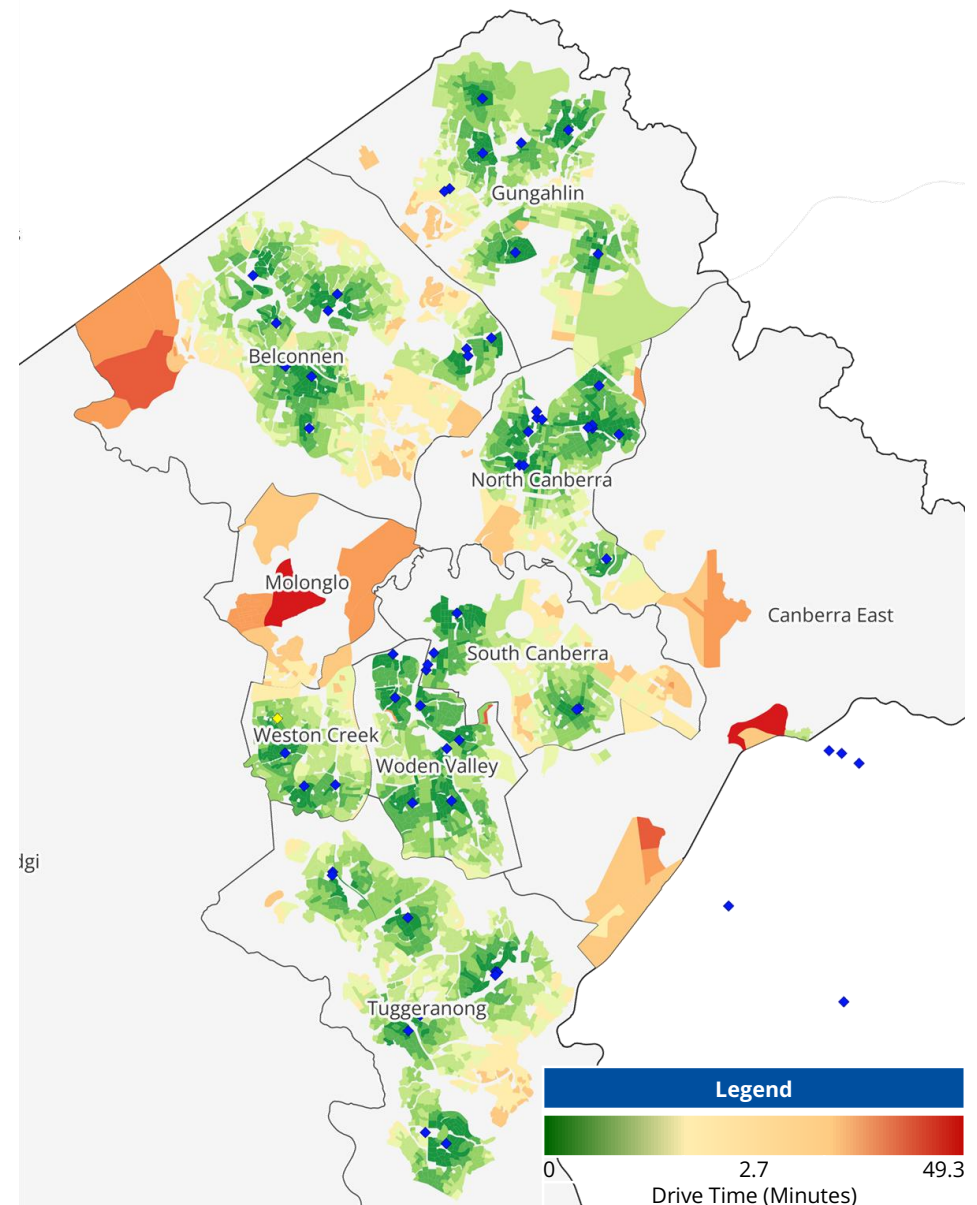
There are 57 synthetic wickets across the ACT, with an additional 8 in nearby Queanbeyan and Googong, providing a strong geographic spread and accessibility to the ACT community.

In addition to the provision of synthetic wickets there are an additional 21 bare concrete wickets. These venues allow for more casual and unstructured participation opportunities and provide future opportunities to strategically expand the synthetic wicket network.

The vast geographic spread of synthetic wickets provides relatively high levels of accessibility to ACT residents. With a mean drivetime of 2.96 minutes and a median drive time of 2.7 minutes, synthetic wickets are the most accessible form of cricket playing surface in the ACT.

Despite the generally high accessibility, areas of low accessibility still exist. These areas include key growth areas of the Molonglo Valley and the western parts of the Belconnen district.

Synthetic Wicket Accessibility x Planning District			
District	Wickets in District	Accessed by Residents	Mean Travel Time
Belconnen	10	14	3.4
Canberra East	0	9	8.6
Gungahlin	8	8	3.1
Molonglo	0	4	6.7
North Canberra	12	10	2.8
South Canberra	6	6	3.3
Tuggeranong	10	10	2.9
Weston Creek	4	6	3.0
Woden Valley	7	12	2.5
ACT Total	57	57	2.96



Synthetic Wicket - Provision

While synthetic wickets have generally high accessibility by the community, localised provision levels vary significantly, with extremely high ratios of residents per wickets in some parts of the ACT.

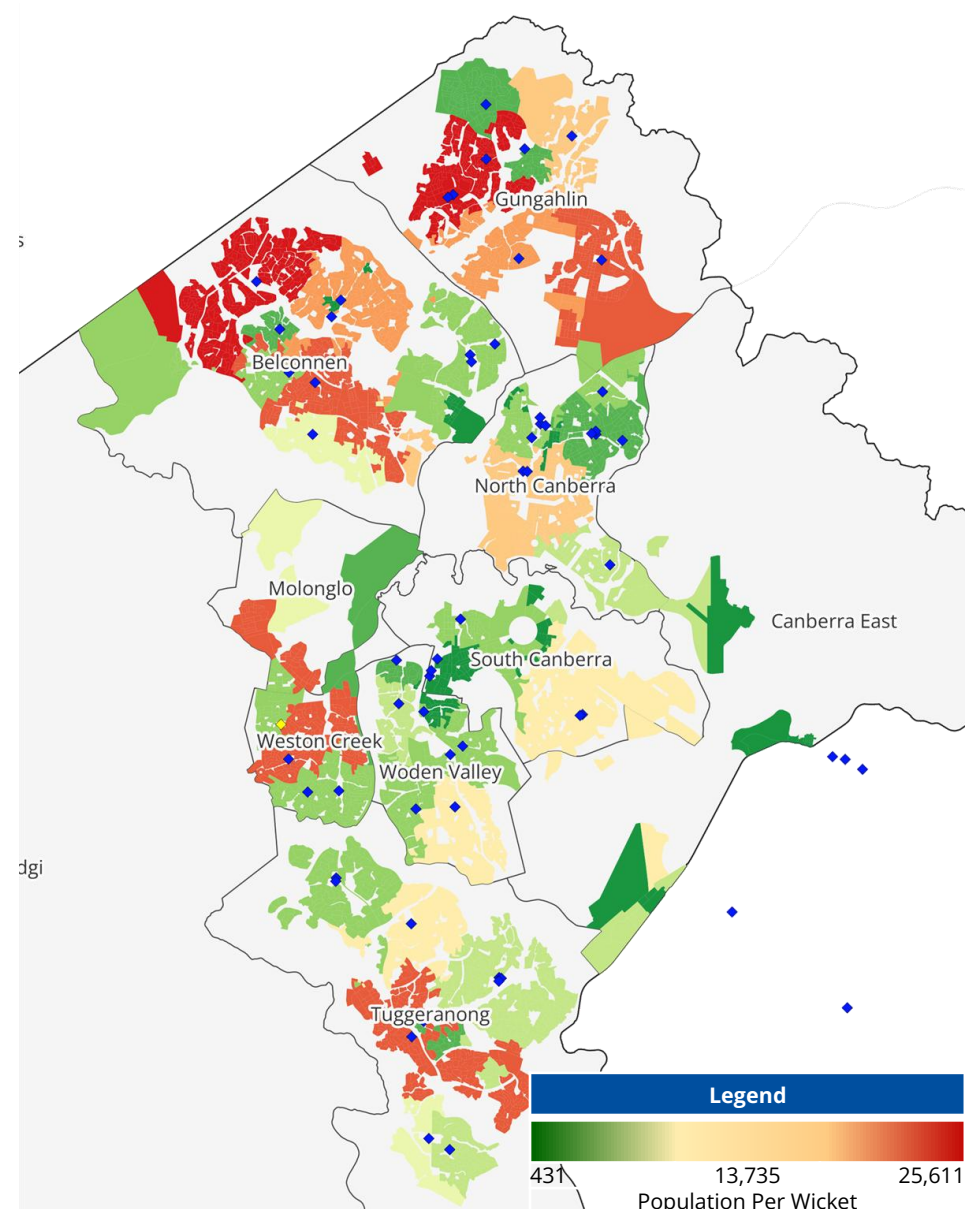
These disparities are most evident in rapidly growing suburbs where facility delivery has lagged population growth, as well as densifying inner-city districts where demand pressures are intensifying.

Additionally, the variance in quality between the synthetic wickets in network results in usage being unevenly distributed, with higher quality facilities having greater usage and further exaggerating demand and provision gaps in some areas.

Areas with relatively high level of provision include parts of South Canberra and the Woden Valley, as well as North Canberra and the eastern parts of the Belconnen district. These areas all have localised provision of one synthetic wicket per 5,000 resident or less.

By contrast, there are significant areas across the Belconnen, Gungahlin and Weston Creek district where localised provision exceeds one wicket per 12,000 residents, and exceeding one wicket per 20,000 resident is western areas of Belconnen and central Gungahlin.

Synthetic Wicket Provision x Planning District			
District	Wickets in District	Accessed by Residents	Population: Wicket (Access)
Belconnen	10	14	17,239
Canberra East	0	9	6,229
Gungahlin	8	8	19,212
Molonglo	0	4	18,045
North Canberra	12	10	12,941
South Canberra	6	6	9,789
Tuggeranong	10	10	9,783
Weston Creek	4	6	13,193
Woden Valley	7	12	7,390
ACT Total	57	57	13,735



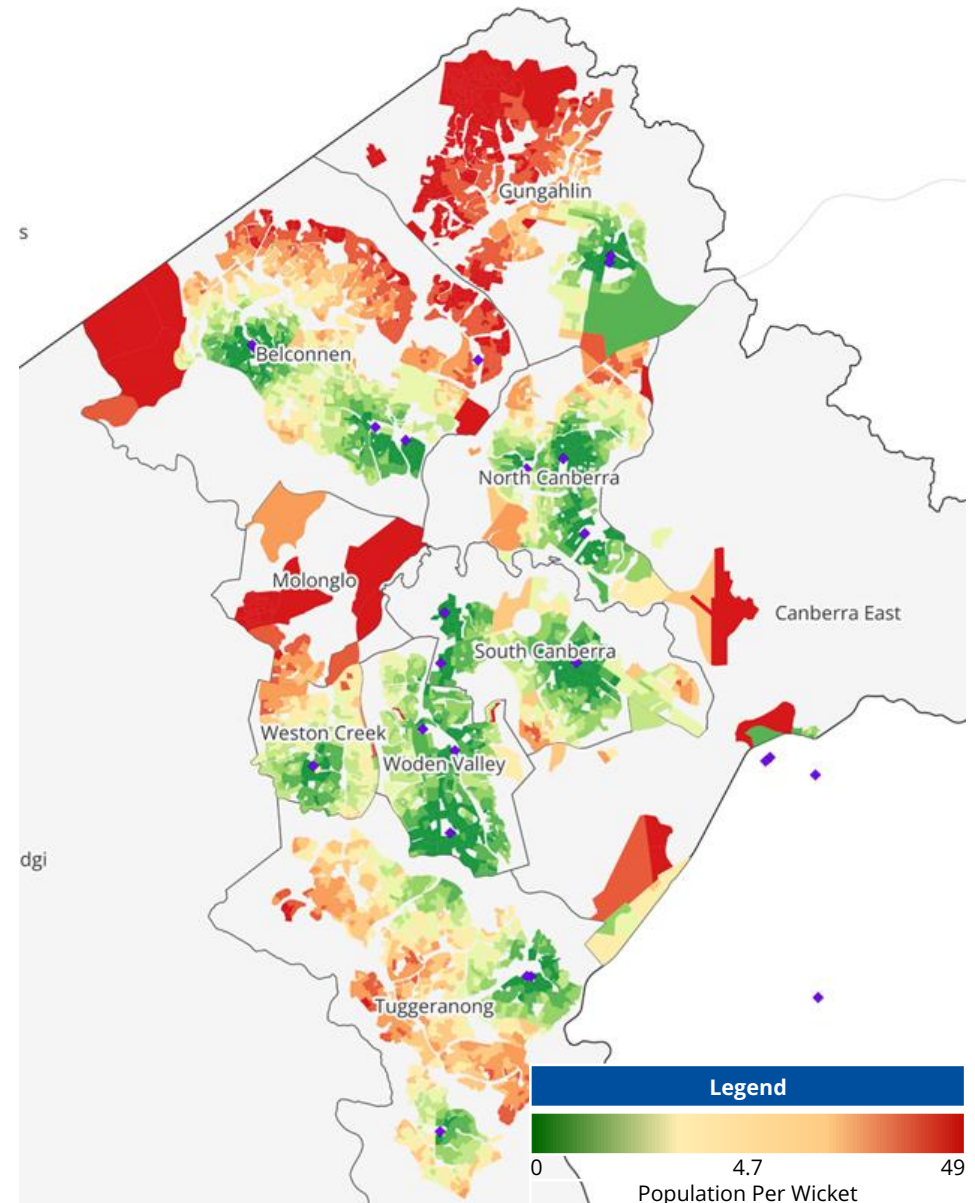
Turf Wicket - Accessibility

The ACT has 20 turf wickets on public land, with an additional six located on private school sites and at the ANU campus. There are also an additional four turf wickets located in Queanbeyan and Googong.

Reflecting the low and more dispersed provision of turf wickets, accessibility is lower for turf wickets than for synthetic wickets. The mean drive time to access a turf wicket in the ACT is 4.7 minutes with a median drive time of 4.3 minutes.

As with synthetic wickets, not all turf wickets provide the same quality of playing experience. This results in greater demand from clubs for turf wickets that can provide high-quality playing experience, increasing the usage of these facilities and the travel times for participants in higher-level competitions.

Turf Wicket Accessibility x Planning District			
District	Wickets in District	Accessed by Residents	Mean Travel Time
Belconnen	5	5	5.4
Canberra East	0	8	9.4
Gungahlin	2	3	6.8
Molonglo	0	3	7.8
North Canberra	3	7	4.0
South Canberra	3	6	3.1
Tuggeranong	3	4	4.6
Weston Creek	1	3	4.4
Woden Valley	3	5	3.1
ACT Total	20	20	4.7



Turf Wicket - Provision

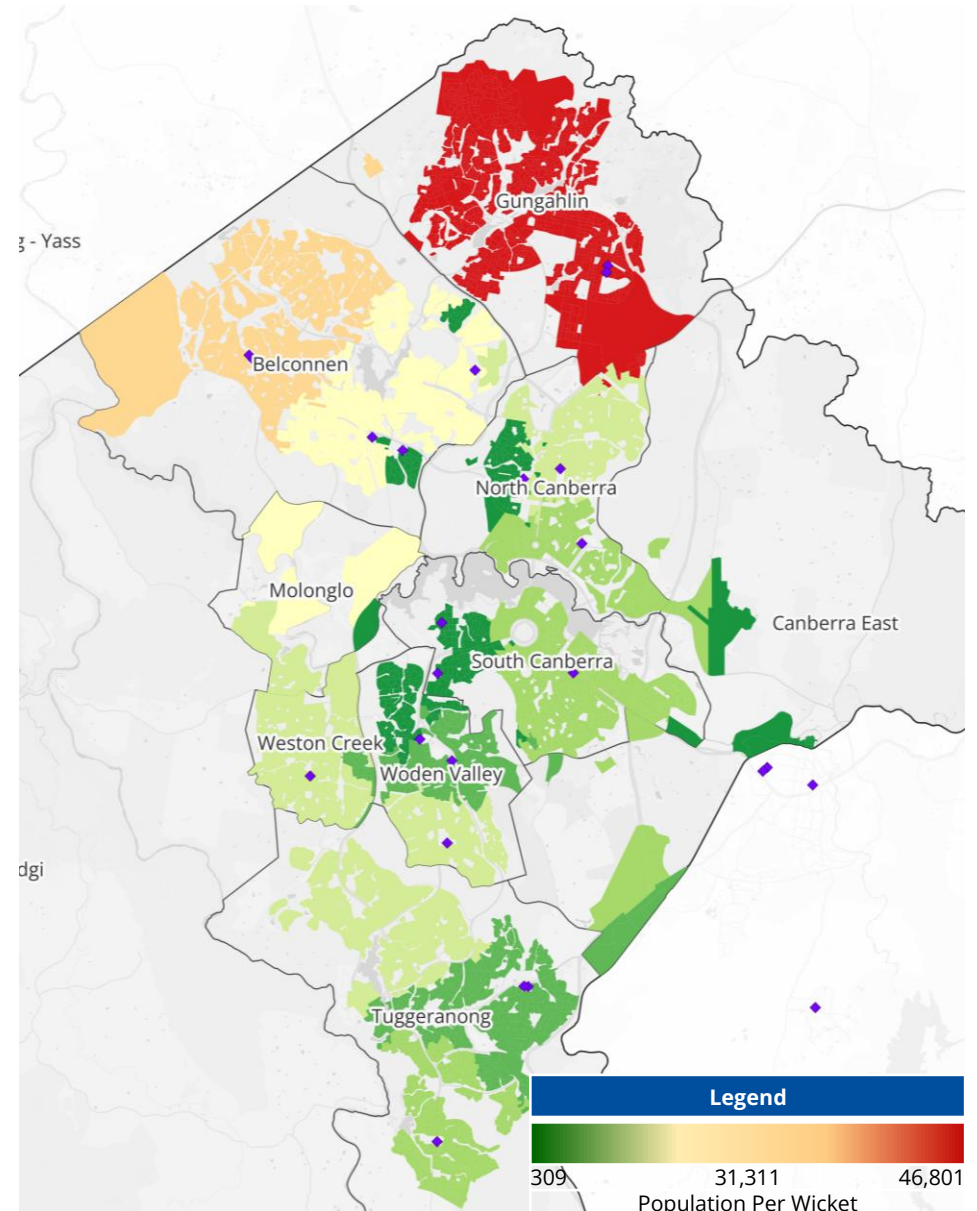
Provision ratios for turf wickets vary dramatically across the ACT, ranging from one wicket per 309 residents in the best-served areas to just one wicket per 46,801 residents in the lowest-provisioned areas.

Such disparities highlight the inequity of access to turf cricket and reinforce concerns that the existing network cannot keep pace with participation growth or sustain the demands of talent pathways.

The limited provision of turf wickets a means many talented players are forced to travel outside their local area to access suitable playing and training environment. Players in lower-provision areas face greater travel burdens, resulting in a fragmented talent pathway and reduced retention of high-performing players.

Similar to synthetic wickets, areas with low levels of turf wicket provision are most evident in the growing suburbs where facility delivery has largely focused on synthetic wickets.

Turf Wicket Provision x Planning District			
District	Wickets in District	Accessed by Residents	Population: Wicket (Access)
Belconnen	5	5	34,170
Canberra East	0	8	13,985
Gungahlin	2	3	44,300
Molonglo	0	3	39,404
North Canberra	3	7	26,024
South Canberra	3	6	20,936
Tuggeranong	3	4	27,406
Weston Creek	1	3	36,718
Woden Valley	3	5	22,052
ACT Total	20	20	31,311



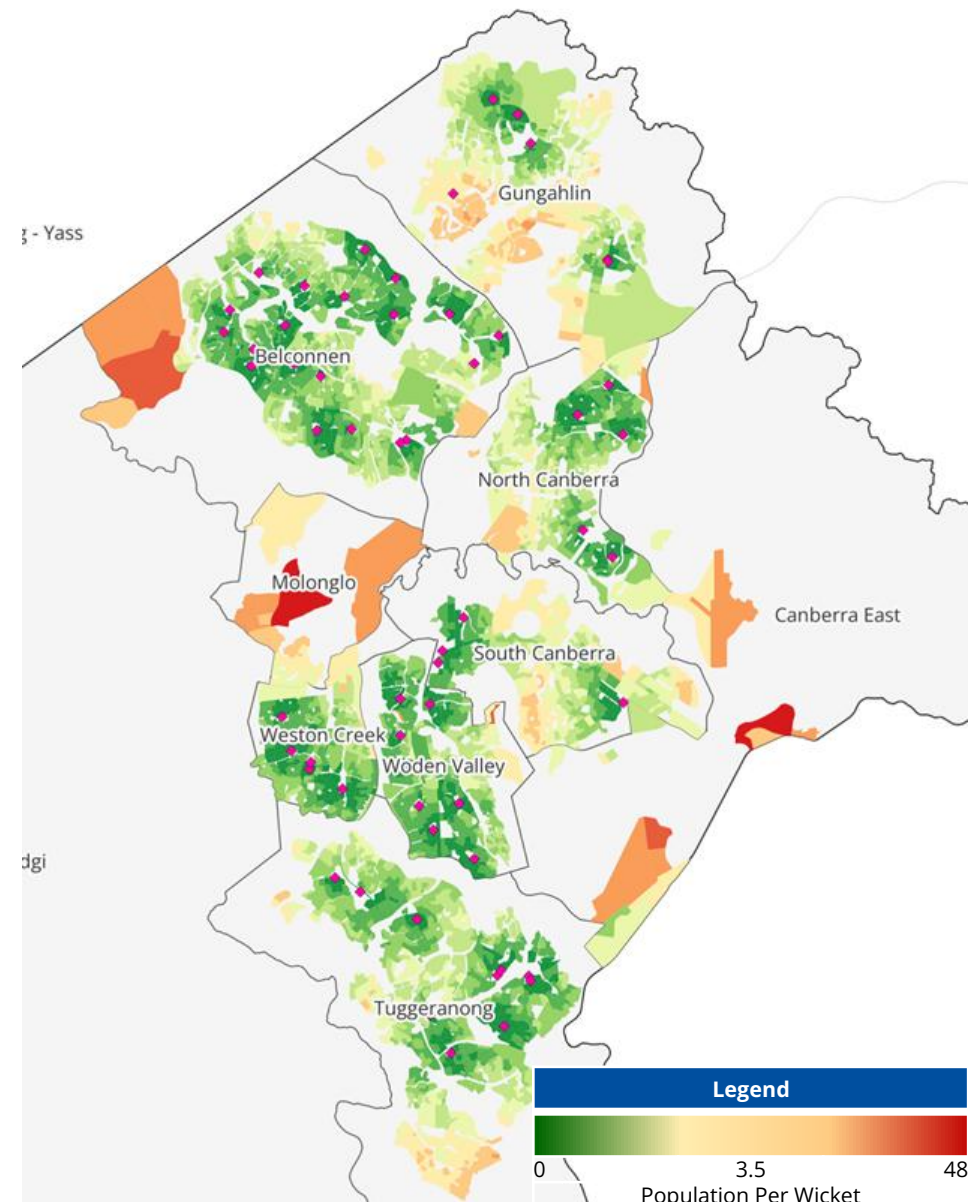
Practice Nets - Accessibility

Across the ACT, residents have access to 57 publicly accessible practice net sites delivering access to 149 lanes. Additionally, many private schools have practice nets facilities, although there is limited access to these facilities by the public.

Overall accessibility to practice facilities is high, with an average drive time of just over 3.5 minutes and a median travel time of just under 3 minutes. This reflects Canberra's compact geography and the relatively even spatial spread of facilities, ensuring that most players can reach a net facility within minutes of their home.

Areas of low accessibility include the whole of the Molonglo Valley district, south-western parts of Gungahlin district (Nicholls, Palmerston and Casey) and southern areas of Tuggeranong (Gordon, Banks and Condor).

Practice Nets Accessibility x Planning District				
District	Nets in District	Accessed by Residents	No. of Lanes	Mean Travel Time
Belconnen	21	21	54	2.9
Canberra East	0	6	15	10.6
Gungahlin	6	8	21	4.1
Molonglo	0	5	13	6.3
North Canberra	5	8	19	3.4
South Canberra	4	7	16	3.5
Tuggeranong	10	13	36	3.1
Weston Creek	6	9	26	2.6
Woden Valley	8	10	20	2.5
ACT Total	57	57	149	3.5



Practice Nets - Provision

While the drive-time analysis suggests strong access to practice nets by ACT residents, the distribution and capacity of net lanes highlight significant inequities across the ACT.

At the best-provisioned end of the spectrum, some areas are provisioned as good as one lane per 6,500 residents, enabling high levels of participation and training opportunity. By contrast, in under-serviced areas the ratio stretches to one lane per 24,113 residents, indicating severe gaps in provision.

These disparities are most pronounced in growth corridors such as Molonglo Valley and Gungahlin, where rapid population expansion has outstripped facility development. At the same time, densifying districts such as the Inner North and Belconnen face mounting pressures on existing facilities, as more residents compete for limited access.

This uneven provision underscores the need for a targeted approach to investment, with priority given to growth areas, high-demand districts, and facilities in poor condition. Without such intervention, geographic inequities will persist and continue to constrain participation growth.

Practice Nets Provision x Planning District			
District	Nets in District	Lanes Accessed by Residents	Population: Lane (Access)
Belconnen	21	54	9,636
Canberra East	6	15	14,641
Gungahlin	8	21	18,638
Molonglo	5	13	11,254
North Canberra	8	19	15,117
South Canberra	7	16	16,549
Tuggeranong	13	36	16,561
Weston Creek	9	26	7,998
Woden Valley	10	20	6,594
ACT Total	57	149	13,599

