



CRICKET
ACT

Cricket ACT

Infrastructure Strategy

March 2026



Acknowledgement Of Country

Cricket ACT acknowledges the Traditional Custodians and ancestors of the land we live and meet on, the Ngunnawal people. Cricket ACT acknowledges that other people and families also have a traditional connection to the lands of the ACT and region and we respect this connection to country. We honour and pay respect to the Elders in our local communities, both past and present.

We celebrate the participation of First Nations peoples, families and communities, and recognise their individual and collective shared connection and history with cricket.

We also value the contribution that other diverse cultures, identities and lifestyles make to our region, which ultimately enhances the richness of our society and cricket community.



Table of Contents

Foreword	4
Introduction	5
Overview of Cricket in the ACT	6
Community Impact of Cricket in the ACT	7
National Community Cricket Infrastructure Strategy	8
Australian Cricket Infrastructure Fund	9
Cricket ACT Infrastructure Strategy Framework	10
Key Infrastructure Priorities	12
CACT Wicket Hierarchy	13
Key Challenges & Opportunities	14

Foreword



Cricket has always held a special place in Canberra. It is played with pride in schoolyards, suburban ovals, premier grounds and backyards. Now, more than ever, the sport is on the cusp of transformative growth as the ACT enters a new era of growth and expansion.

Canberra's multicultural communities, particularly those from South Asia with strong cricketing traditions, are driving unprecedented demand across both traditional and emerging formats of the game. Junior cricket and Cricket Blast participation are growing faster in the ACT than in most parts of the country, yet this growth is outpacing the availability of fit-for-purpose facilities.

Much of the infrastructure that supports cricket was built for a different era and has not received the investment required to keep pace with community needs. Many playing surfaces are uneven and degraded, changerooms and amenities are tired, unsafe or inadequate, and turf wickets carry a reputation for being 'low and slow.' These challenges affect the enjoyment of the game, place increasing pressure on volunteers, and limit the ability to attract and retain more women, girls and multicultural participants.

The Cricket ACT Infrastructure Strategy (CACTIS) sets out a bold and necessary agenda: to build an inclusive, sustainable and accessible network of cricket facilities that

positions Canberra as the heart of cricket participation and player pathways for the surrounding region. Achieving this vision will require new approaches, stronger partnerships, and sustained investment, but also a willingness for the cricket community to evolve alongside the broader ACT community.

The CACTIS outlines how the current facility network can be transformed into one that supports lifelong participation, strengthens the homegrown player pathway, and establishes Canberra as a true regional hub for talent development. It also champions innovative approaches to maintenance and management, leveraging partnerships with schools, government and other sports to deliver better outcomes for all.

This is not just a plan for cricket infrastructure; it is a plan for communities and a plan for providing inclusive spaces that foster healthier, more active children, welcome diverse participants, and strengthen connections across the community. With strategic investment, collaboration and a shared commitment to excellence, cricket in the ACT can thrive as a sport for everyone, everywhere, and for generations to come.

A handwritten signature in black ink, appearing to read 'Lauren Coates'.

Lauren Coates
Infrastructure & Government Relations Manager
Cricket ACT

The Cricket ACT Infrastructure Strategy (CACTIS) sets the strategic direction and provides the ACT cricket community and its stakeholders with clear priorities to investment into cricket infrastructure.

The objective of the CACTIS is to:

- Establish an evidence base to advocate for investment into cricket infrastructure in the ACT.
- Identify key priority investment areas that are strategically important for the growth of the game.
- Ensure all existing and future facilities are fit-for-purpose and meet Cricket Australia's Community Cricket Facility Guidelines.
- Create a sustainable approach to facility development and investment.
- Build the capability and capacity of Cricket ACT, affiliated clubs and the broader cricket community to advocate, maintain and manage cricket facilities.

This Strategy will strengthen the rationale for continued investment into cricket infrastructure across the Territory. In conjunction with the *Community Impact of Cricket in the ACT* Study, it also helps build a case for increased and strategic investment by the ACT Government and other key stakeholders into key areas and infrastructure to support growing interest and participation in the game.

Key Infrastructure Priorities



Elevated playing field condition and maintenance practices.



Increased provision and quality of practice nets.



Continuation of the Turf Block Renewal Program.



Upgrade of supporting amenities (e.g. toilets and changerooms).



Additional playing fields to meet growing demand for participation.

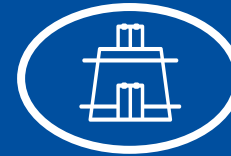
Overview of Cricket in the ACT



15,329

Registered Participants

2024/25 Season



77

Cricket Playing Fields in the ACT
(excluding school facilities)



1,217

Cricket Blast Participants



2,467

Junior Club Participants



4,089

Senior Club Participants

57

Synthetic Wickets



20

Turf Wickets



1 : 6,283

Cricket Playing Fields per ACT Resident

1 : 199

Cricket Playing Fields per Registered Participant



4,577

Social Cricket Participants



2,937

Indoor Cricket Participants



9%
Year-on-Year Participation Growth



12%
Female Participation



Practice Nets

57

Sites

149

Lanes



5

School Cricket Pitches

Sources: Cricket Australia Census 2024/25, Cricket ACT Facility Audit, ACT Government

Annual Community Impact of Cricket in the ACT

\$14,464,393 per annum



Annual Economic Benefit

\$14,254,711

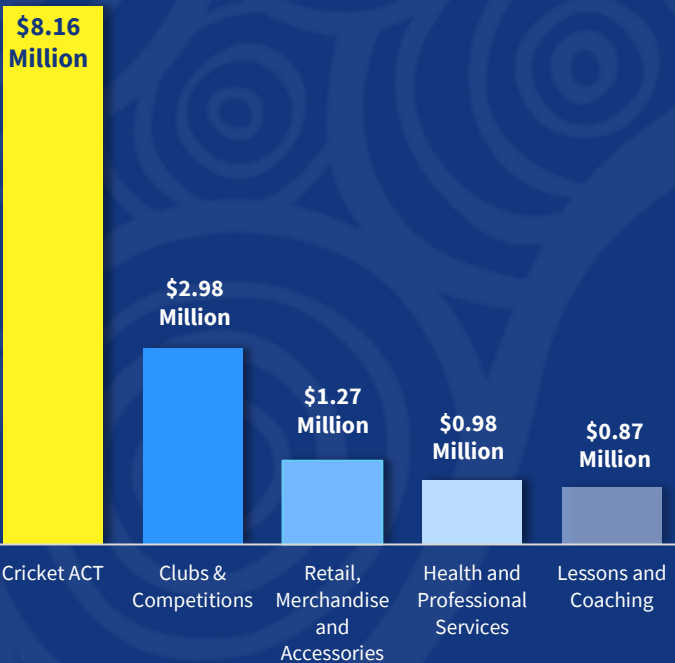


Cricket's Unique Social Strengths



Annual Health Benefit

\$209,682



Welcoming Gateway for Multicultural Communities

Multi-Generational and Life-Long Participation

Peer-Led Mental Health Support and Camaraderie

Youth Leadership and Personal Growth

Platform for Community Resilience and Support



Physical Health Benefit

\$141,397

Mental Health Benefit

\$68,285



Lifetime Community Health Benefit

\$6,086,199

National Community Cricket Infrastructure Strategy

The National Community Cricket Infrastructure Strategy (NCCIS) has been developed by Cricket Australia (CA) to establish clear strategic priorities and action plans to bolster cricket participation and increase the sports impact nationwide. The NCCIS has been developed in alignment with Australian Cricket's strategic planning framework.





CA plays a pivotal role in funding and advocating for cricket infrastructure investment across the nation. Recent efforts have focused on key initiatives to:

- Increase grassroots participation and engagement
- Addressing barriers to female participation
- Leverage cricket for positive social change in local communities.

CA's objective is for cricket to remain a sport embraced by people of all ages, genders, abilities, and cultural backgrounds, in all locations across the country.



NCCIS Strategic Framework

Vision	To grow the game and unite communities by providing Australians with equal opportunity to play cricket on fit-for-purpose fields with necessary supporting infrastructure.					
Investment Principles	Community Focussed		Equity and Diversity		Value Optimising	Sustainable and Resilient
Strategic Responses	Improve existing cricket playing field and pitch quality to maximise capacity in high-demand areas.	Seek to achieve minimum standards for existing cricket infrastructure.	Expand where cricket can be played via use of existing community infrastructure and innovative approaches.	Deliver new fit-for-purpose playing fields and facilities in strategic locations.	Provide gender-inclusive amenities and other enabling and accessible facilities.	Invest strategically to improve asset resilience during periods of intense rainfall and drought.
Strategy Actions	 Advocate	 Fund	 Communicate Standards	 Develop Partnerships		

Australian Cricket Infrastructure Fund

The Australian Cricket Infrastructure Fund (ACIF) is a national funding program created by Cricket Australia in partnership with its state and territory cricket associations.

The ACIF supports the delivery of facility and infrastructure projects for community cricket clubs, with a strong focus on growing participation and making facilities more accessible and inclusive. The ACIF does not fund whole projects but supports the delivery of projects by partnering with other funding bodies and co-contributing to the total project cost. This partnership approach means every dollar invested from ACIF often leverages additional investment from other sources, multiplying its impact on the ground.

Since 2023, the ACIF has contributed over \$560,000 in funding to local projects, helping to unlock approximately \$2.5 million in total cricket infrastructure upgrades across the ACT.

It has supported the delivery of 15 successful projects in the ACT, to address critical needs in the cricket community.

Key upgrades delivered with ACIF support include:

- **Practice Net Facilities:** 6 new or refurbished synthetic practice net complexes for training.
- **Turf Wicket Renewals:** 4 turf wicket block reconstructions to protect and rejuvenate quality playing surfaces.
- **Pavilion Improvements:** 3 clubhouse/pavilion upgrades to provide modern, inclusive amenities for players and supporters.
- **Other Amenities:** Construction of new shade structures and an equipment storage shed to support club activities.

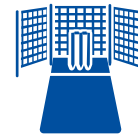
Each of these projects have been a success because of the collaborative investment approach, leveraging the ACIF funding to unlock or multiply contributions from clubs, schools and government.

\$560,000*

ACIF Funding Received by
ACT Clubs

\$2.5 million

Total Project
Funding Unlocked



6

New or Upgraded
Practice Nets



4

Turf Wicket
Renewals



3

Clubhouse or
Changeroom Upgrades



2

Shade & Storage
Amenities

* Since September 2023

Cricket ACT Infrastructure Strategy

Our vision for cricket facilities and infrastructure in the ACT is...

“An inclusive, sustainable and accessible network of fit-for-purpose cricket facilities that establishes the ACT as the heart of cricket participation and pathway opportunities for Canberra and the surrounding region.”

Implementation of the CACTIS will deliver:

- Playing fields across the ACT that are safe, well-maintained, and fit-for-purpose for the needs of our cricket community.
- High-quality turf and synthetic wickets which support consistent performance, optimal skill development, and long-term sustainability and durability.
- A network of training and practice facilities that are high-quality, well-maintained, accessible and support player development at all levels.
- A proactive and sustainable maintenance program accompanied by a long-term infrastructure investment plan aligned with key priority areas in our growing community.
- High levels of satisfaction amongst our participants and stakeholders with the standard, accessibility, and condition of facilities.
- Cricket environments which foster positive, inclusive, and repeatable experiences that drive lifelong participation in cricket.
- Ground amenities, including changerooms, toilets, and shelters, are inclusive, accessible, and supportive of diverse user needs.
- Strong, collaborative partnerships with schools, other sports and the ACT Government to create opportunities for shared spaces and coordinated investment.

Strategic Framework

Guiding Documents



Cricket ACT Infrastructure Strategy – Strategic Framework

Key Theme



Access, Affordability and Equity



People, Skills and Delivery



Advocacy, Partnerships and Influence

Strategic Objective

Ensure all ACT residents have access to safe, inclusive and affordable cricket facilities by prioritising investment, removing barriers and supporting flexible participation formats.

Build a skilled, supported and sustainable workforce that can deliver, maintain and sustainably manage high-quality cricket infrastructure across the ACT.

Strengthen Cricket ACT’s influence through strategic partnerships, coordinated advocacy and evidence-based messaging to shape investment, policy and access to shared infrastructure.

Focus Areas

- Target infrastructure investment in areas with limited access or future growth.
- Improve affordability and inclusion through pricing reform and universal design.
- Activate informal spaces and flexible formats to increase participation.
- Partner with schools and recommission dryland ovals to expand the facility network.

- Build volunteer and professional capability in turf and ground maintenance.
- Establish support models, apprenticeships and regional maintenance hubs.
- Expand internal CACT capacity to guide clubs through infrastructure planning.
- Support adoption of smart technologies for sustainable facility management.

- Strategic and coordinated engagement with ACT Government to influence funding and policy objectives.
- Position cricket as a contributor to health, social cohesion and economic value.
- Develop joint investment proposals with other sports to strengthen advocacy.
- Secure long-term access agreements with schools and shared-use partners.

Key Infrastructure Priorities

The following key infrastructure priorities will guide Cricket ACT's focus and investment over the coming years, ensuring that facility improvements directly support the Strategy's vision for a sustainable, inclusive and high-quality cricket network. Together, these priorities provide a clear and coordinated framework for Cricket ACT and its partners to target investment, improve facility standards, and deliver better experiences for players, clubs and the wider community.



Elevated playing field condition and maintenance practices.

Many ACT grounds are uneven, slow, and inconsistently maintained, affecting enjoyment and player development. Improved maintenance practices, irrigation and grass selection suited to Canberra's climate will deliver more consistent and higher-quality playing surfaces to support positive participation experiences.



Increased provision and quality of practice nets.

The existing network of practice nets are heavily utilised by the cricket community, but many are in disrepair, unsafe, and overcapacity. Upgrading and expanding the provision of practices nets, around schools and high-demand venues, will improve accessibility, safety and support participation growth.



Continuation of the Turf Block Renewal Program.

Canberra's turf wickets are known for being "low and slow" due to the aging turf blocks, challenging climate and limited curator support. Continuing the Turf Block Renewal Program, with stronger technical oversight and curator training from CACT, will raise quality, consistency, and player development outcomes.



Upgrade of supporting amenities (e.g. toilets and changerooms).

Many venues lack appropriate access to toilets, changerooms, limiting inclusion and comfort for women, girls, and participants from multicultural communities. Upgrading these facilities to modern, safe, and contemporary standards will enhance participation and community experience.



Additional playing fields to meet growing demand for participation.

Participation growth and population expansion, particularly in Gungahlin and Molonglo Valley, are straining the capacity of the existing playing field network. New fields and targeted recommissioning of dryland ovals will relieve pressure, improve access, and support equitable growth across the ACT.

CACT Wicket Hierarchy

The CACT wicket hierarchy provides a framework to guide the planning, investment and management of cricket wickets and playing fields across the ACT. Unlike other jurisdictions across the country, the hierarchy is applied to individual fields rather than to venues as a whole, meaning one venue can contain multiple playing fields of differing hierarchy levels.

The CACT Hierarchy has been designed to align with the existing hierarchy for playing fields used by the ACT Government. This alignment will enable Cricket ACT to manage community expectations for investment, strengthen advocacy for improved maintenance standards, and prioritise infrastructure upgrades more effectively. It will also provide a structured basis for negotiating seasonal usage with other sport codes.

As participation in cricket continues to grow, particularly among juniors, women, and multicultural communities, the Wicket Hierarchy will become an essential tool for guiding investment, optimising field allocation, and ensuring equitable access.

Wicket Surface Type	CACT Wicket Hierarchy	ACT Government Hierarchy	First Class	Premier		Senior Club	Junior Club	Social Cricket	Cricket Blast	School Cricket	
				Grade 1 & 2	Grade 3 & 4						
Turf	First Class	Tier 1	✓								
	Premier – Home	Enclosed		✓						✓	
	Premier - Satellite	District			✓	✓					✓
		Neighbourhood				✓					✓
	School – Turf	N/A			✓	✓					✓
	Other - Turf	N/A	Subject to quality								
Synthetic	Club - Home	Enclosed				✓	✓			✓	
		District				✓	✓	✓		✓	
	Club – Satellite	Neighbourhood				✓	✓	✓	✓	✓	
	Informal	Informal						✓	✓		
	School - Synthetic	N/A				✓	✓			✓	
	Other - Synthetic	N/A									

✓ Primary Use
 ✓ Secondary Use

Key Challenges and Opportunities

The identification of cricket's key infrastructure challenges and opportunities in the ACT has been shaped by extensive consultation with the cricket community, the ACT Government and key stakeholders of the game in the ACT.

This consultation process included:

- Workshops with junior, premier clubs;
- In-depth interviews with key stakeholder including representatives of the ACT Government, other ACT sport organisations and Cricket ACT staff;
- Site visits and informal discussions with community cricket representatives and school staff.

The consultation process provided a clear picture of how facilities are being used, where pressures are emerging, and what actions are most needed to sustain participation growth and improve player experiences.

Across all engagement activities, stakeholders consistently highlighted the aging and inadequate condition of supporting amenities, the inconsistency of ground maintenance and turf wicket standards, and the limited access to quality training and practice facilities. Many clubs also raised concerns around the challenges of sharing facilities with winter sports and the growing inequity between clubs with differing capacities to fund or co-contribute to upgrades.

Despite these challenges, the consultation also revealed a strong sense of optimism and opportunity. Stakeholders recognised the potential for cricket to leverage Canberra's youthful and multicultural population, the value of strategic partnerships with schools, and the benefits of improved lighting, indoor training capacity, and more flexible and social participation formats.

Together, these insights provide the foundation for the Strategy's actions and priorities, focused on delivering a more inclusive, sustainable, and high-performing cricket infrastructure network that reflects the ACT's growing and diverse community.



Ageing and Inadequate Supporting Amenities

Many of the ACT's sporting infrastructure were constructed in the 1960s and 1970s and have not seen meaningful upgrades since. As a result, amenities such as changerooms, toilets, storage, and shade structures are no longer aligned with contemporary expectations. Some venues lack these amenities altogether, with players required to change in cars, equipment being stored at volunteers' homes and spectators and players relying on temporary shade structures.

Additionally, the absence of gender-neutral changeroom designs, safe and accessible toilets, and the inclusion of universal design features limits the participation of women and girls, multicultural communities and people with a disability. These shortfalls not only present equity and inclusion barriers but contribute directly to poor game-day experiences for players, volunteers, and spectators, increasing the risk of disengagement and participant loss.



Key Challenges

Provision, Quality and Access to Practice Nets

Practice nets are among the most used assets in the ACT cricket facility network, supporting both formal club training and informal, casual use. However, there is currently an undersupply of quality net facilities to meet existing demand. In many clubs, nets are booked solid throughout the week, limiting access for different age groups and program types.

Moreover, many existing nets are in poor condition, with worn surfaces, damaged fencing, and outdated safety design that no longer meet modern safety or functionality guidelines.

Their deterioration not only limits participation but presents risks for users, particularly junior players, and passersby. Given the important role practice nets play in skill development and casual cricket exposure, upgrading and expanding practice nets will be critical to supporting participation growth.



Ground Maintenance Standards

Field maintenance across the ACT cricket network is inconsistent and often misaligned with the needs of the game. A key concern is the length of grass on outfields, which is frequently too long to allow for optimal playing conditions. This slows the ball significantly, suppressing run scoring and limiting fielding engagement, both of which diminish the enjoyment and competitiveness of matches. Additionally, it impacts the confidence and retention of junior cricketers who see their peers in other states making significantly higher run totals during matches.

In addition to the grass length, residual damage from diesel line-markings used by winter codes has left many outfields with deep ruts and uneven surfaces, increasing injury risk and causing erratic ball movement.

The bi-annual two-week ground maintenance shutdown of all sports grounds also creates significant disruptions to pre-season training and delays the start of the season. This is despite only a small number of grounds receiving maintenance during this period. The resulting impact of the closures, delays crucial turf wicket preparation by curators and impacts competition scheduling when grounds are not ready for the start of the season. It also increases pressure on volunteers to find alternative training during this period, often in competition with other clubs and sports.

These issues collectively have a negative impact on participant satisfaction and experience, and ultimately lead to participants leaving the sport.

Key Challenges

Turf Wicket Preparation

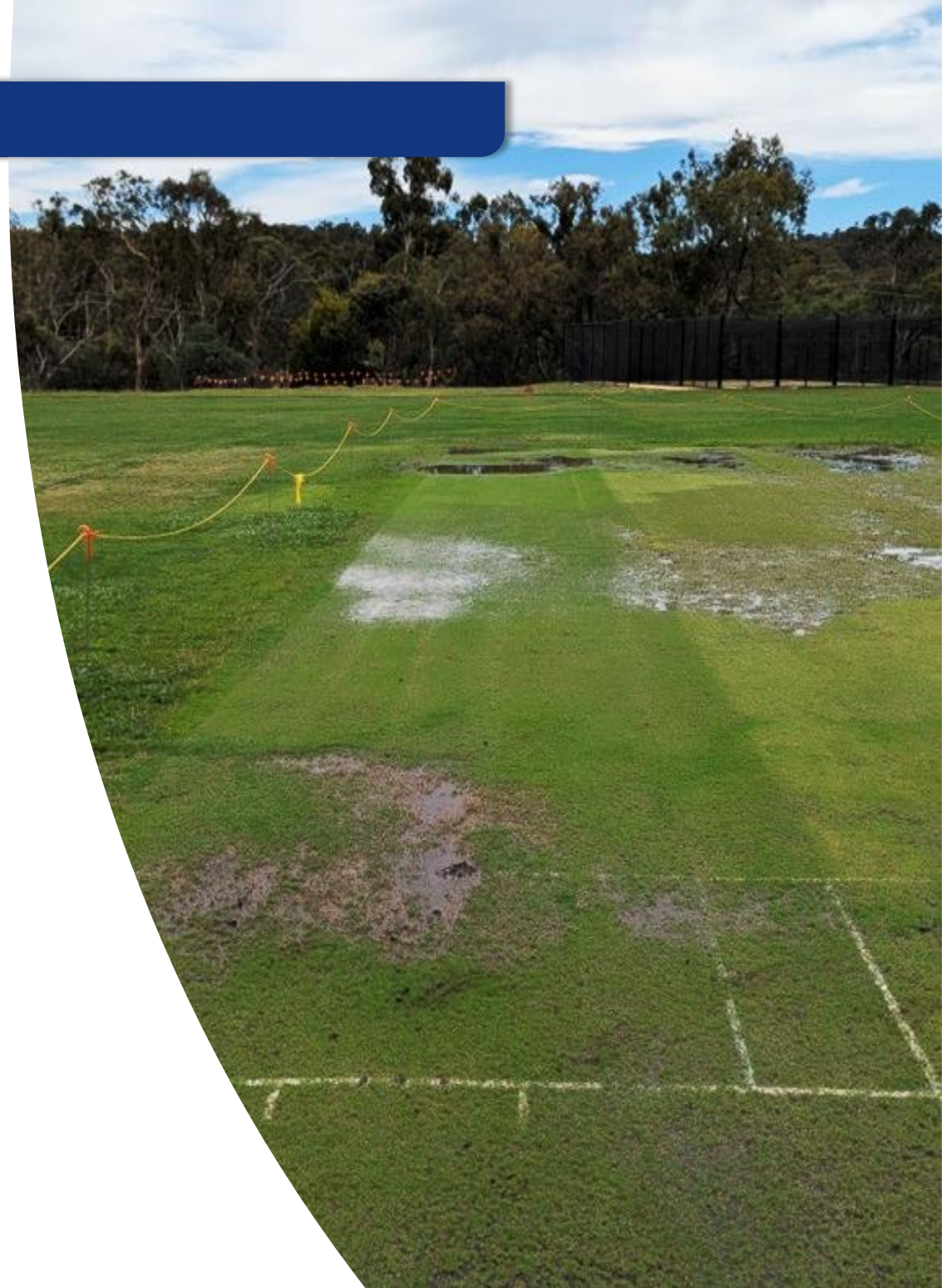
Turf wickets in Canberra have a reputation for being “low and slow,” with unpredictable bounce and poor pace, characteristics that negatively affect player development, match quality, and talent identification.

Many emerging talented players bypass the ACT Premier competitions altogether in favour of more competitive turf environments in Sydney and Melbourne, weakening the local talent base and local pathways.

This issue is compounded by the age and condition of many turf wicket blocks and the overwhelming reliance on volunteer curators with limited formal training.

Curation is highly technical, physically demanding, and time-intensive work. As the volunteer workforce declines and fewer individuals are willing to take on the role, clubs are losing valuable local expertise.

Without structured support, training pathways, or workforce pipelines, the standard of turf wicket preparation is unlikely to improve, despite investment in physical infrastructure.





Access and Utilisation of School Facilities

School facilities represent a significant, underutilised asset in Canberra’s cricket and public infrastructure ecosystem. Two high-impact opportunities exist for cricket leverage these assets:

- Many private schools feature high-standard turf and net infrastructure. Formal partnerships could enable this infrastructure to be strategically activated for use by elite teams, pathway programs and premier clubs.
- Public schools in growth areas, and areas with provision and accessibility gaps, offer ready access to green space. The installation of synthetic wickets and practice nets at school sites can not only increase the access and provision of cricket infrastructure to the community, but also unlock new participation format by leveraging demand for before- and after-school care programs.

Season Creep and Sport Code Conflict

Season creep resulting from extended finals series for winter codes and demands for pre-season training from both cricket and football codes are increasingly leading to scheduling clashes and increased tension between clubs.

Season creep has a direct impact on turf wicket preparation, as grounds are either inaccessible or not in a condition suitable for early season rejuvenation work. Many cricket stakeholders feel that cricket’s need to prepare turf wickets are too often deprioritised in favour of increased finals scheduling for winter codes.

Without formal agreements or designated ‘primary use’ ovals, increasing demand and ground sharing will continue to result poor quality playing surfaces, increased maintenance costs, and the erosion of goodwill between sports.

Key Challenges

Funding Inequity and Barriers

The ACT Government faces a constrained fiscal environment, with limited budgets available for sport infrastructure investment. Cricket, despite being one of the largest users of public open space, is can be viewed by parts of government as a cost centre rather than a community investment. This perception limits the sport’s ability to attract sustained public funding, especially in a competitive and resource-constrained environment.

At a club level, financial capacity to co-invest in infrastructure is highly variable. While some clubs have levy schemes, strong sponsorship, or historical access to gambling revenue, others rely on modest player fees and volunteer fundraising. The result is a widening gap between “haves” and “have-nots”, where better-resourced clubs continue to attract investment, while others fall further behind.

Additionally, the growing complexity of grant applications favour clubs with greater administrative support, further entrenching inequity. Without targeted intervention, these disparities will compromise equity of access and the strategic development of the cricket network.



Stronger Strategic Advocacy

While cricket's broad participation base and high levels of engagement with multicultural and junior participants is acknowledged, the economic and social benefits the game delivers are not well understood. As a result, cricket's contribution and impact is often undervalued in public policy and budget decisions.

The Community Impact of Cricket in the ACT Study provides Cricket ACT with a powerful evidence base to reposition cricket as a key contributor to economic benefits, social cohesion and health outcomes for the ACT community.

By reframing cricket in the eyes of the ACT Government as a vehicle for community impact, rather than a cost centre, Cricket ACT can strengthen its advocacy for continued and increased infrastructure investment and influence of government priorities.

Realignment of Cricket Season

Canberra's weather presents a challenge for turf wicket preparation in the traditional cricket window. The lingering winter cold and resulting insufficient soil temperatures are challenging for even the best curators to prepare consistent and high-quality wickets. Paradoxically, many wickets reach peak quality just as the season is coming to an end and finals reduce the number of games played.

Realigning the season to start later and finish later could optimise conditions for turf quality, enhance the playing experience, and reduce turf damage from early-season play. While this shift would require coordination with winter codes, it presents a pragmatic solution to improve surface quality and player outcomes.

Key Opportunities

Expand Indoor Training Capacity

Canberra's weather extremes, cold winters and hot summers, can present challenges for those seeking year-round cricket participation opportunities. Indoor training facilities mitigate these barriers, providing controlled environments for skill development, early-season training, and off-season engagement.

They are especially important to the player development and the talent pathway, offering consistent access to high-quality facilities regardless of weather or daylight hours.

While the business case for a standalone community indoor training facilities can be challenging to justify, the Boorer Family Cricket Centre at Radford College highlights the power of school-community partnerships. However, its location in the northern suburbs leaves a geographic gap in access. Establishing a comparable facility in southern Canberra would enhance equity, expand participation capacity, and increase community access to year-round cricket infrastructure.

Recommissioning Dryland Ovals

The ACT has a network of dryland ovals, resulting from being decommissioned as irrigated playing fields during previous droughts to save water. While these sites would require significant investment to restore and get back to playing conditions, they offer a cost-effective alternative to acquiring new land in areas of high demand.

Strategically recommissioning ovals in areas with geographic gaps or capacity constraints would allow cricket to expand its facility footprint and improve access without the cost of a greenfield development. In some cases, basic upgrades such as irrigation, a synthetic centre wicket and shade structures could return these spaces for community use.





Centralised Turf Wicket Management and Oversight

Turf wicket preparation across the ACT is largely driven by dedicated volunteer and semi-professional curators who work tirelessly to support Premier Cricket. While many deliver impressive outcomes, few have access to formal training or technical support, relying instead on inherited practices passed down through generations of club custodians.

However, extreme weather, pest pressure, and the aging state of many turf blocks are making this work increasingly complex. As curator numbers decline and burnout rises, clubs face the risk of losing critical local knowledge and expertise, a challenge that has led clubs in other states to outsource turf preparation to expensive third-party contractors.

Cricket ACT's turf block renewal program presents an opportunity to lift the quality and change the ACT's reputation for 'low and slow' wickets. To protect this investment and support a lift in overall standards, a more coordinated and centralised turf management approach is needed.

Cricket ACT's internal curation team is well-positioned to lead this change. By providing hands-on training, technical advice, and where necessary direct management of turf wickets, the team can support clubs to consistently deliver high-quality playing surfaces while reducing the burden on volunteers.

This model has the potential to ensure a sustainable future for cricket on turf wickets in the ACT and builds long-term resilience into the system.

Key Opportunities

Playing Field Lighting

Lighting is an enabler of more flexible and adaptive participation opportunities, allowing cricket to shift training and competition outside of daylight constraints.

Evening lighting expands programming into twilight hours, supports mid-week competitions, and improves player welfare by allowing play during cooler parts of the day in summer.

On their own, cricket lighting projects can be cost-prohibitive, however, collaborating with winter sport codes present an opportunity to get lighting project across the line. By strategically identifying opportunities to improve capacity and activate underutilised venues, Cricket ACT can partner and support grant applications and in return, co-fund lighting upgrades to meet cricket's needs.

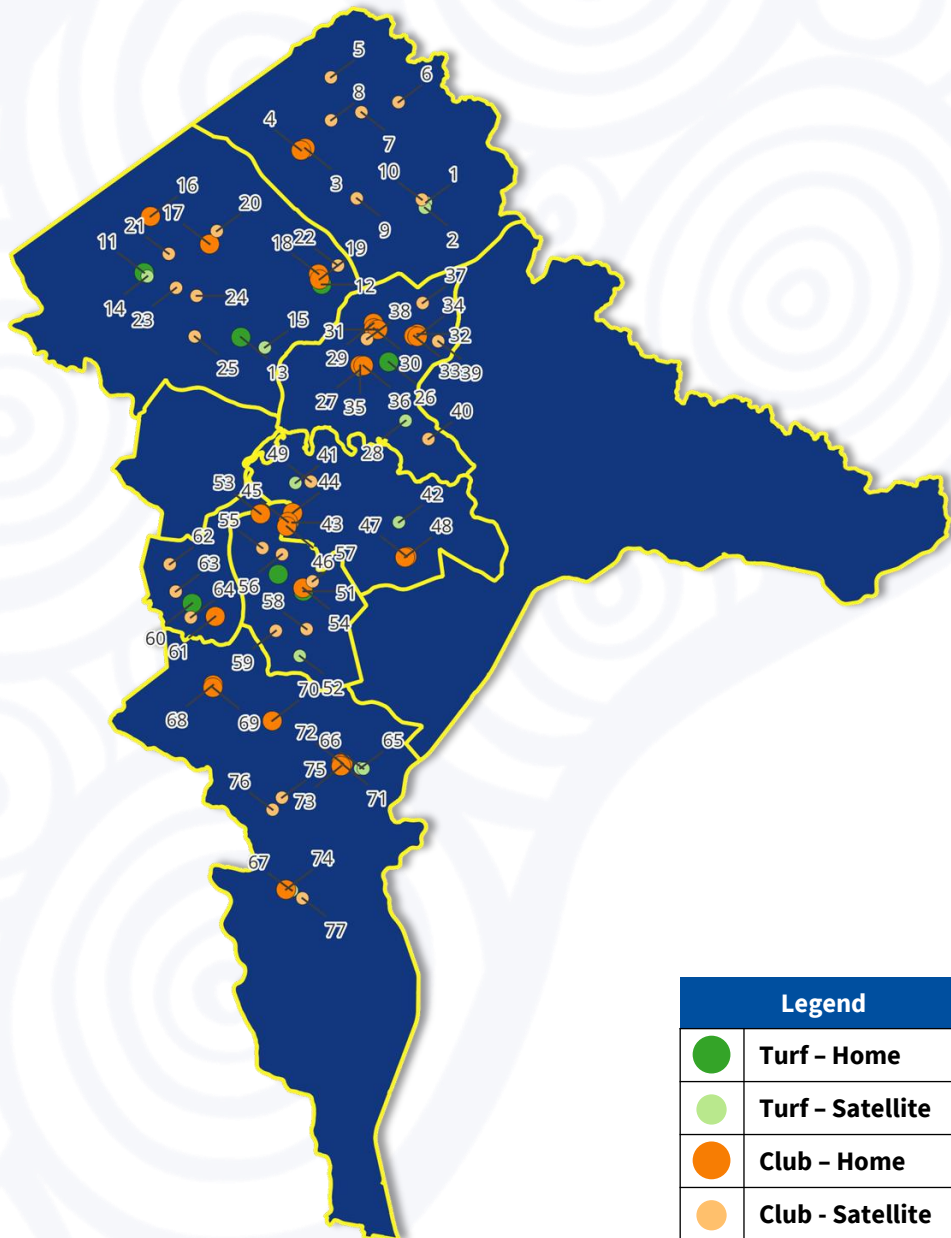
Regional Talent and Competition Hub

Canberra's location, existing Premier Cricket competition and network of turf wicket facilities, position it as a potential pathway hub for emerging talent from within the ACT and the surrounding regions.

Strategic and targeted investment to support the delivery of consistent and high-standard turf wickets would not only raise local performance standards but also expand Cricket ACT's influence.



Overview of ACT Cricket Wickets



Legend	
●	Turf - Home
●	Turf - Satellite
●	Club - Home
●	Club - Satellite

Map ID	Venue Name	Hierarchy Level	Map ID	Venue Name	Hierarchy Level
1	Harrison 105	Turf - Satellite	40	Campbell 101	Club - Satellite
2	Harrison 106	Turf - Satellite	41	Yarralumla 202	Turf - Satellite
3	Nicholls 301	Club - Home	42	Kingston Oval	Turf - Satellite
4	Nicholls 203	Club - Home	43	Deakin 201	Turf - Satellite
5	Taylor 103	Club - Satellite	44	Deakin 105	Club - Home
6	Bonner 103	Club - Satellite	45	Deakin 205	Club - Home
7	Amaroo 203	Club - Satellite	46	Deakin 211	Club - Home
8	Ngunnawal 103	Club - Satellite	47	Narrabundah 203	Club - Home
9	Palmerston 103	Club - Satellite	48	Narrabundah 204	Club - Home
10	Harrison 203	Club - Satellite	49	Yarralumla 104	Club - Satellite
11	Holt 301	Turf - Premier	50	Phillip 401	Turf - Premier
12	Kaleen 201	Turf - Premier	51	Phillip 101	Turf - Premier
13	Macquarie 101	Turf - Premier	52	Mawson 105	Turf - Satellite
14	Holt 102	Turf - Satellite	53	Curtin 110	Club - Home
15	Aranda 103	Turf - Satellite	54	Phillip 203	Club - Home
16	Charnwood 129	Club - Home	55	Curtin 203	Club - Satellite
17	Melba 104	Club - Home	56	Hughes 103	Club - Satellite
18	Kaleen 110	Club - Home	57	Garran 101	Club - Satellite
19	Kaleen 109	Club - Home	58	Mawson 303	Club - Satellite
20	Melba 203	Club - Satellite	59	Pearce 103	Club - Satellite
21	Latham 104	Club - Satellite	60	Stirling 101	Turf - Premier
22	Kaleen 304	Club - Satellite	61	Waramanga 109	Club - Home
23	Scullin 103	Club - Satellite	62	Duffy 101	Club - Satellite
24	Page 103	Club - Satellite	63	Rivett 104	Club - Satellite
25	Weetangera 103	Club - Satellite	64	Chapman 102	Club - Satellite
26	Ainslie 201	Turf - Premier	65	Chisholm 106	Turf - Satellite
27	O'Connor 101	Turf - Satellite	66	Chisholm 102	Turf - Satellite
28	Reid 104	Turf - Satellite	67	Gordon 202	Turf - Satellite
29	Lyneham 211	Club - Home	68	Kambah 109	Club - Home
30	Lyneham 210	Club - Home	69	Kambah 108	Club - Home
31	Lyneham 209	Club - Home	70	Wanniassa 105	Club - Home
32	Dickson 110	Club - Home	71	Gowrie 115	Club - Home
33	Dickson 109	Club - Home	72	Gowrie 116	Club - Home
34	Dickson 111	Club - Home	73	Gowrie 106	Club - Home
35	O'Connor 301	Club - Home	74	Gordon 103	Club - Home
36	O'Connor 203	Club - Home	75	Isabella Plains 103	Club - Satellite
37	Watson 103	Club - Satellite	76	Bonython 103	Club - Satellite
38	Lyneham 101	Club - Satellite	77	Conder 103	Club - Satellite
39	Hackett 103	Club - Satellite			




CRICKET
ACT

 **Solucio**

 35/328 Reserve Road
Cheltenham, VIC 3192

Level 2, 15 Mayneview Street
Milton, QLD 4064

 info@solucio.com.au

 (03) 9240 5171

 www.solucio.com.au